



JEEVAN VIHAR

RESIDENTIAL LAYOUT

BANNUR MAIN ROAD, MYSURU

— PHASE 2 —



[Click here to View the Google Location](#) 



Premium Residential Layout

Right on Bannur-Kanakapura Highway, Mysuru.

A Smart Investment for the Future

Live in a location that combines peaceful surroundings, strong connectivity, and tomorrow's growth potential. Secure your site in a fast-developing corridor shaped by expanding road infrastructure, educational institutions, and rising real estate demand.

Why this location stands out

This corridor is gaining attention for one simple reason: growth is becoming visible. Ring road connectivity, planned peripheral road expansion, access to Mysuru city, and the wider Bengaluru-Mysuru development story are turning this stretch into a serious residential and investment destination.

Dimensions Available

Sizes in Meter

9 x 13

Location Advantage



2 mins

**Educational Institutions
& Hospitals**



2 mins

Outer Ring Road



10 mins

Mysuru City Centre



15 mins

**Bengaluru-Mysuru
Expressway**



20 mins

Airport



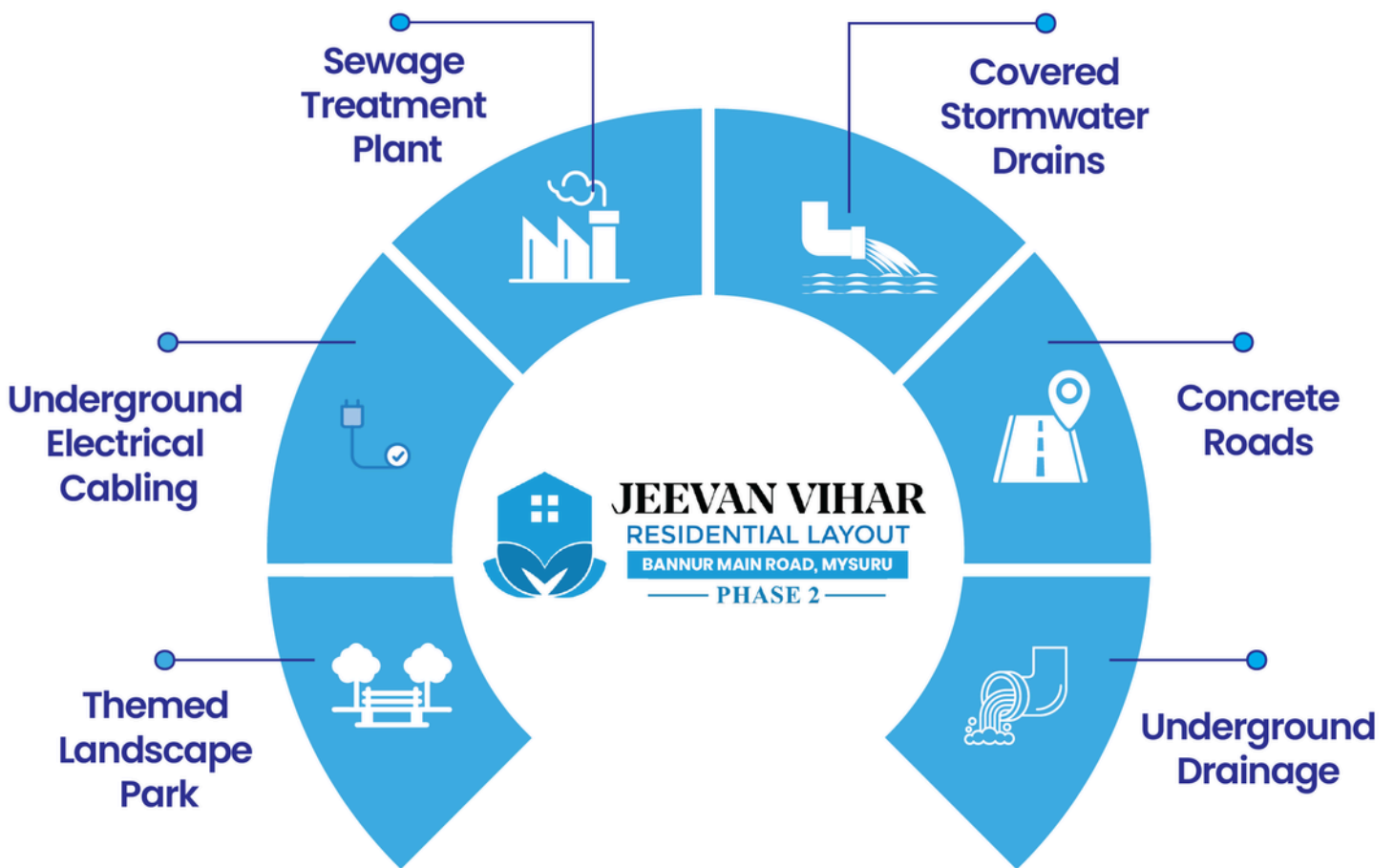
90 mins

Bengaluru

All distances are approximate drive times

Amenities

Modern Infrastructure for Comfortable Living



Bank Loans Available



E-Khata Available



Registration Ready Sites

Why Choose ALLIANCE SQUARE?



**20+ Years of
Real Estate Excellence**



**4000+
Happy Customers**



**More than 45
Layouts Sold**



**Expert Team with
Professional Backgrounds**



**Mysuru's Most Trusted
Real Estate Partner**

Now is the right time in Mysuru.

Here is why



10 Lane Expressway has cut down travel time to Bengaluru to just 1.5 hrs



Proposed Peripheral Ring Road project will enhance Mysuru's pace of development.



Airport Runway Expansion will provide better connectivity with bigger flights



Proposed Cricket Stadium will multiply Mysuru's growth potential



Mysuru City Corporation is Now Greater Mysuru Corporation



The IT Sector is expanding Beyond Bengaluru. Various MNCs will have their campus at Mysuru.



Mysuru's Electronic City will come up in the Varuna region, boosting growth.




Film City project will boost the Economic & Tourism Sector



A VENTURE OF

Safe  **Wheels**TM

GROUP OF COMPANIES

 **0821-2541100**

 info@alliancesquare.com

 www.alliancesquare.com

 #693, S&S Complex, 2nd Floor, Vishwamanava
Double Road, Saraswathipuram, Mysuru - 570 009.